

# Stem end rot on Mango

## Recognize the problem

A dark rot develops from the stem end as the fruit ripens after harvest. In drier areas it may be more serious than anthracnose.

The fruits develop a dark-brown rot at the stem-end of the fruit and spreads fast into the whole fruit. The germ causing the disease can live for a long time and reproduce on the destroyed braches or leaves. This disease starts to show itself after the fruits start to ripen.

## Background

The germ is spread by rain splash and stays alive from season to season on dead leaves and branches. Rainy weather during flowering and early fruit set will help the growth of germs. The germ may also enter the fruit injuries on the stem or skin. Fruit will spoil more quickly if it stays warm after harvesting.

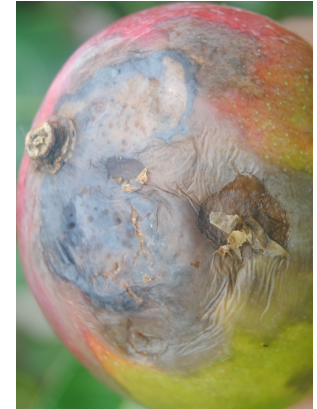
## Management

### Non-chemical control

- If practical, prune dead branches and destroy them a safe distance from the mango trees.
- Carefully handle the fruits to minimise mechanical damage.
- Harvested fruits should be cooled immediately to remove field heat.
- Ensure there is enough air (ventilation) during transport or storage.

Chemical sprays are neither recommended nor necessary.

Stem end rot on mango fruit.  
(Photo by Kengap Horticulture)



Scientific name(s) > *Dothiorella dominicana*; *Lasiodiplodia theobromae*; *Phomopsis mangiferae*

The recommendations in this factsheet are relevant to: many countries where this pest or problem is present



Authors: This factsheet is based on information written for "The Mango Farming Handbook", first published by KENGAP Horticulture 2011.  
Kengap Horticulture Ltd, P.O Box 12898-00400 Nairobi, Kenya  
tel: +254 722 575544; +254 723 491549 email: books@kengap.co.ke;  
www.kengap.co.ke

Edited by Plantwise.